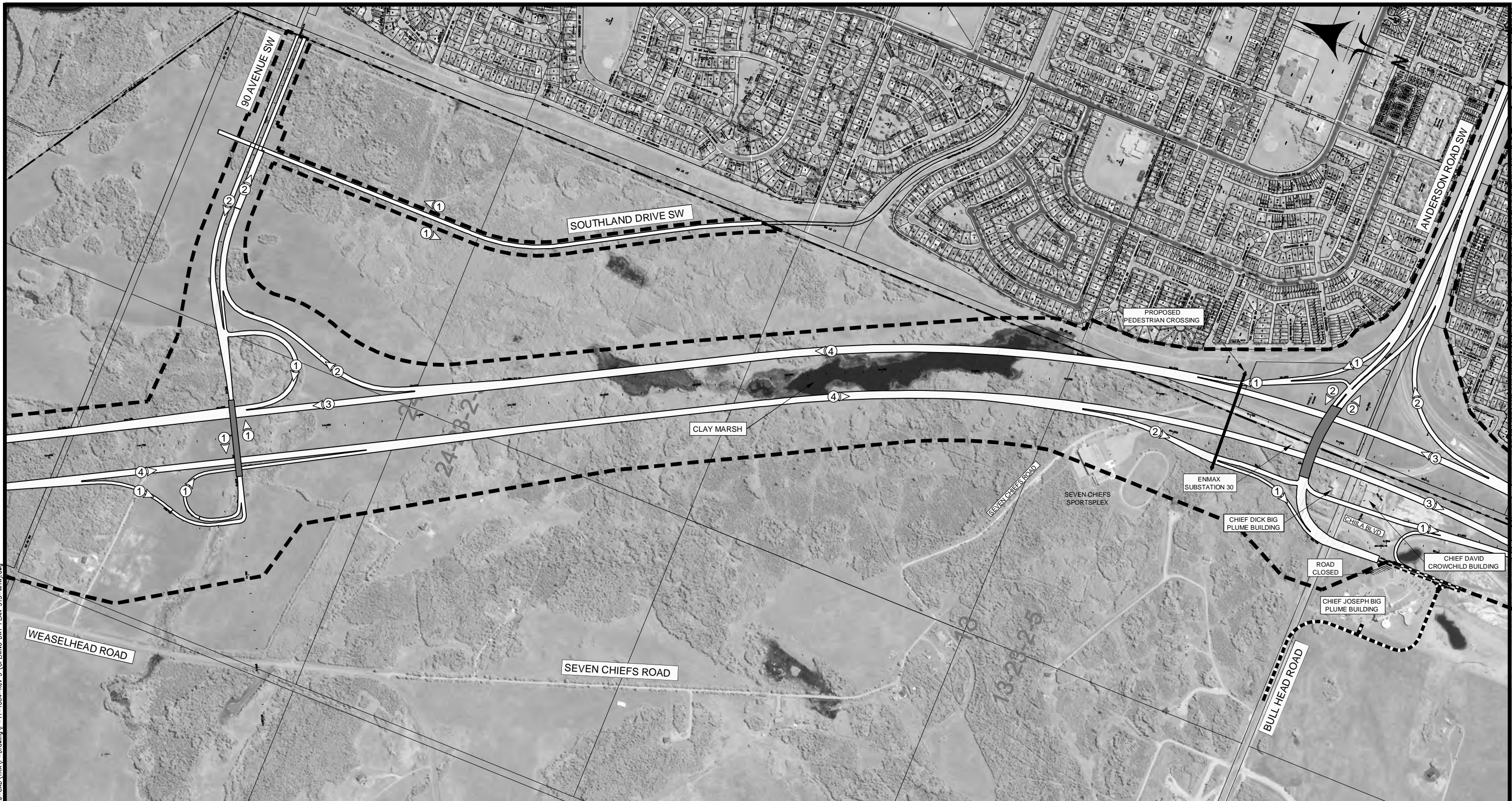


LEGEND:

- Southwest Calgary Ring Road Opening Day Plan
- City of Calgary Boundary
- Southwest Calgary Ring Road Bridges at Opening Day
- Relocated Tsuu T'ina Nation Roads
- Proposed Transportation & Utilities Corridor Boundary
- Number of Lanes at Opening Day
- Elbow River & Fish Creek Re-Alignment

PLOT DATE: 2013-08-22/13:46:49
 BY: FOCUSED
 T:\Projects\2011\060500110 - SNRR - TTN Option 02a - CAD\TRA\P-Drawing\TT-1004-Rev.3 (OPENING DAY PLAN STS-WHW).dwg



LEGEND:

- Southwest Calgary Ring Road Opening Day Plan
- City of Calgary Boundary
- Southwest Calgary Ring Road Bridges at Opening Day
- Relocated Tsuu T'ina Nation Roads
- Proposed Transportation & Utilities Corridor Boundary
- Number of Lanes at Opening Day
- Elbow River & Fish Creek Re-Alignment

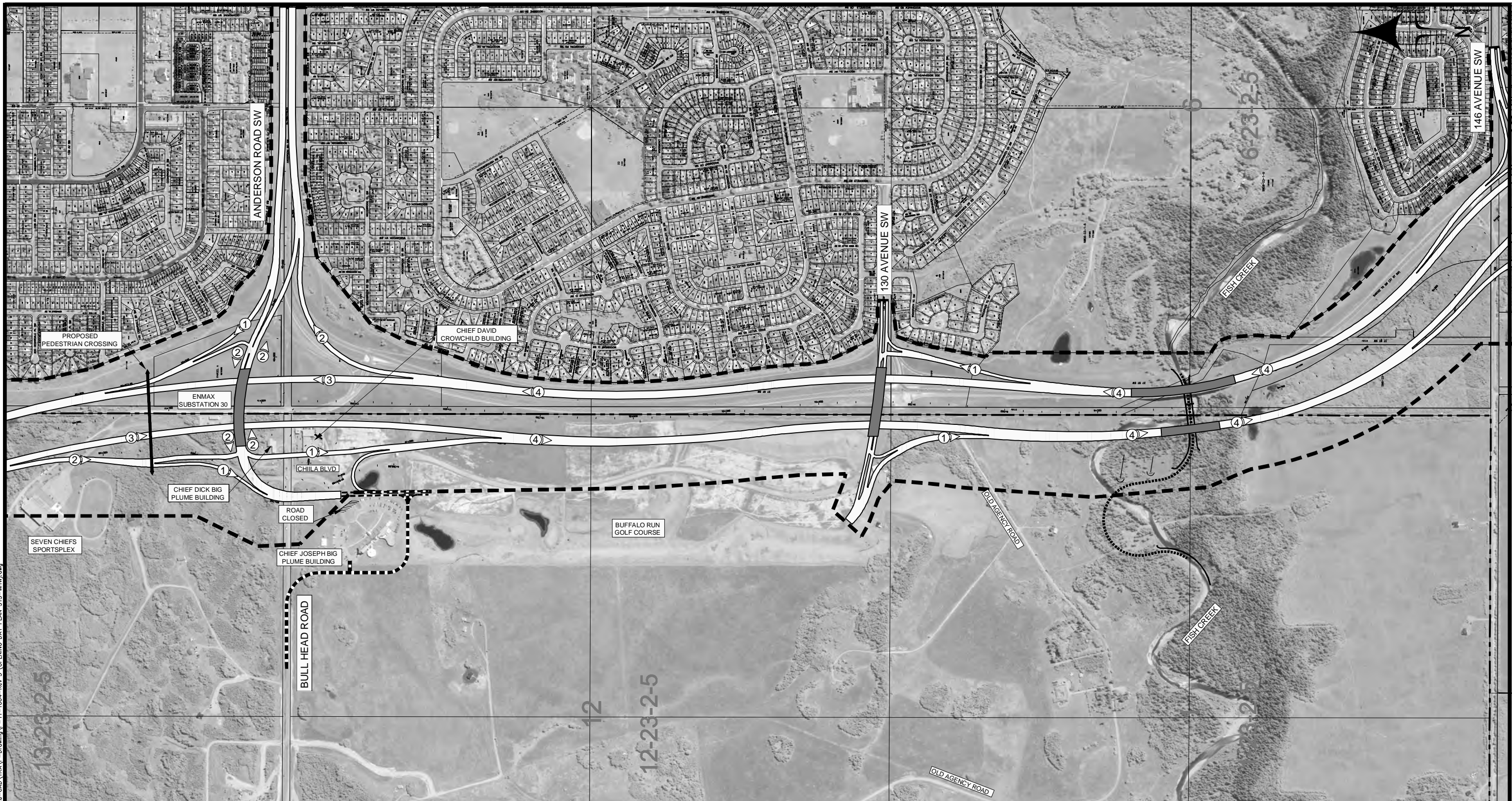
PLOT DATE: 2013-08-23/11:06:05
 BY: FOCUSED
 T:\Projects\2011\060500110 - SNRR - TTN Option 02a - CAD\TRA\P-Drawing\P-TT-1004-Rev.3 (OPENING DAY PLAN STS-WHW).dwg

CONCEPT ONLY

Schedule 3
 Page 2 of 4

NOT TO SCALE

SOUTHWEST CALGARY RING ROAD GLENMORE TRAIL TO 146 AVENUE SW OPENING DAY PLAN			
South Region	Project No. 060500110	Date: 2013-08-22	P-TT-1004 B REV-3



LEGEND:

- Southwest Calgary Ring Road Opening Day Plan
- City of Calgary Boundary
- Southwest Calgary Ring Road Bridges at Opening Day
- Relocated Tsuu T'ina Nation Roads
- Proposed Transportation & Utilities Corridor Boundary
- Number of Lanes at Opening Day
- Elbow River & Fish Creek Re-Alignment

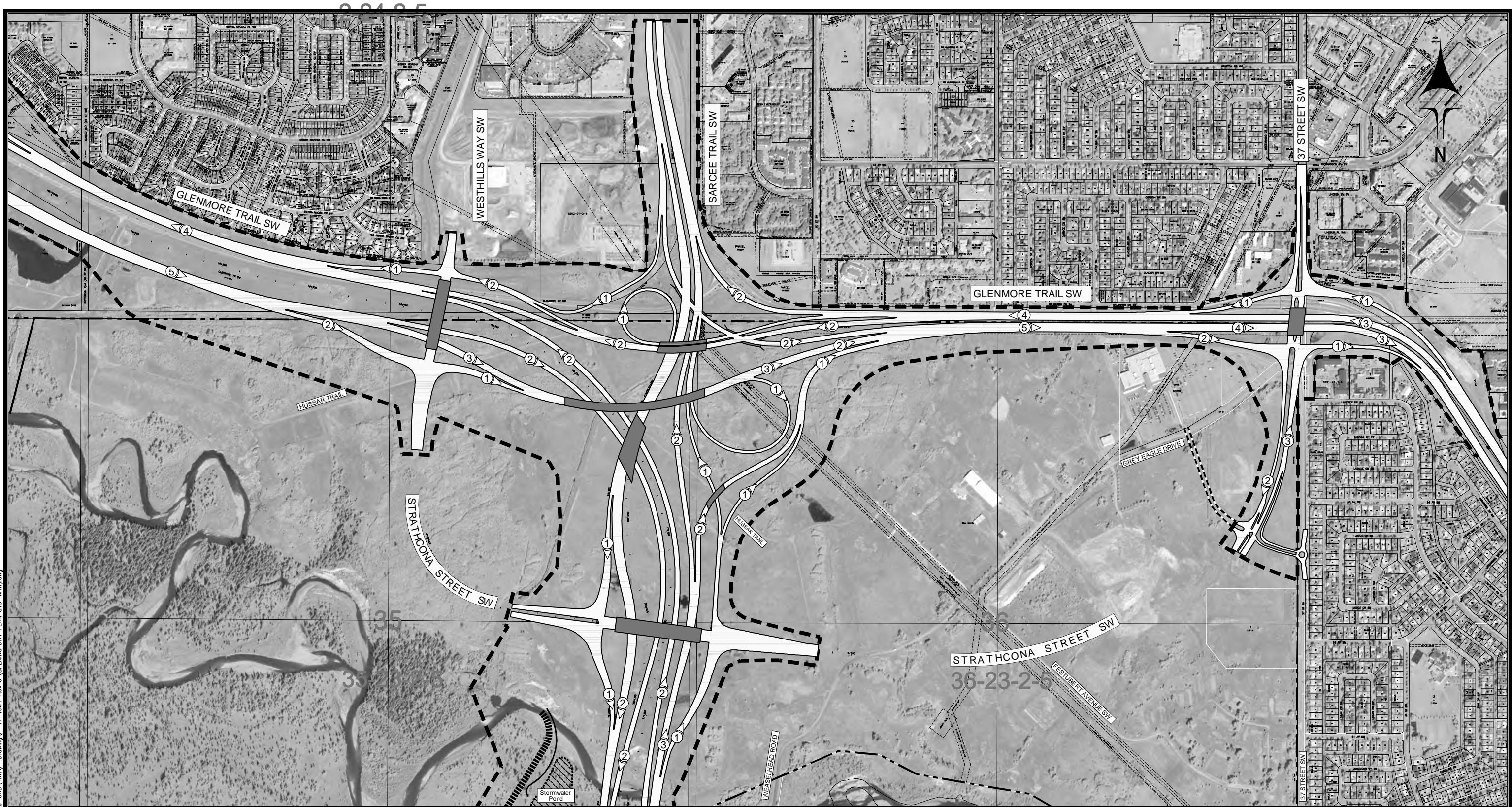
PLOT DATE: 2013-08-23/11:06:05
 BY: FOCUSED
 T:\Projects\2011\06050010 - SWRR - TTN Option 02a - CAD\TRA\P-Drawing\P-TT-1004-Rev.3 (OPENING DAY PLAN STS-WHW).dwg

CONCEPT ONLY

Schedule 3
 Page 3 of 4

NOT TO SCALE

SOUTHWEST CALGARY RING ROAD GLENMORE TRAIL TO 146 AVENUE SW OPENING DAY PLAN			
South Region	Project No. 060500110	Date: 2013-08-22	P-TT-1004 C REV-3



LEGEND:

- Southwest Calgary Ring Road Opening Day Plan
- City of Calgary Boundary
- Relocated Tsuu T'ina Nation Roads
- Proposed Transportation & Utilities Corridor Boundary
- ② Number of Lanes at Opening Day
- ▨ Elbow River & Fish Creek Re-Alignment
- ▬ Southwest Calgary Ring Road Bridges at Opening Day

PLOT DATE: 2013-08-22/13:46:49
 BY: FOCUSED
 T: Projects 2011.06050010 - SNRR - TTN Option 02a - CAD\TRA\P-Drawing\TT-1004-Rev.3 (OPENING DAY PLAN STS-WHW).dwg



CONCEPT ONLY

Schedule 3
 Page 4 of 4

NOT TO SCALE

SOUTHWEST CALGARY RING ROAD GLENMORE TRAIL TO 146 AVENUE SW OPENING DAY PLAN			
South Region	Project No. 060500110	Date: 2013-08-22	P-TT-1004 D REV-3